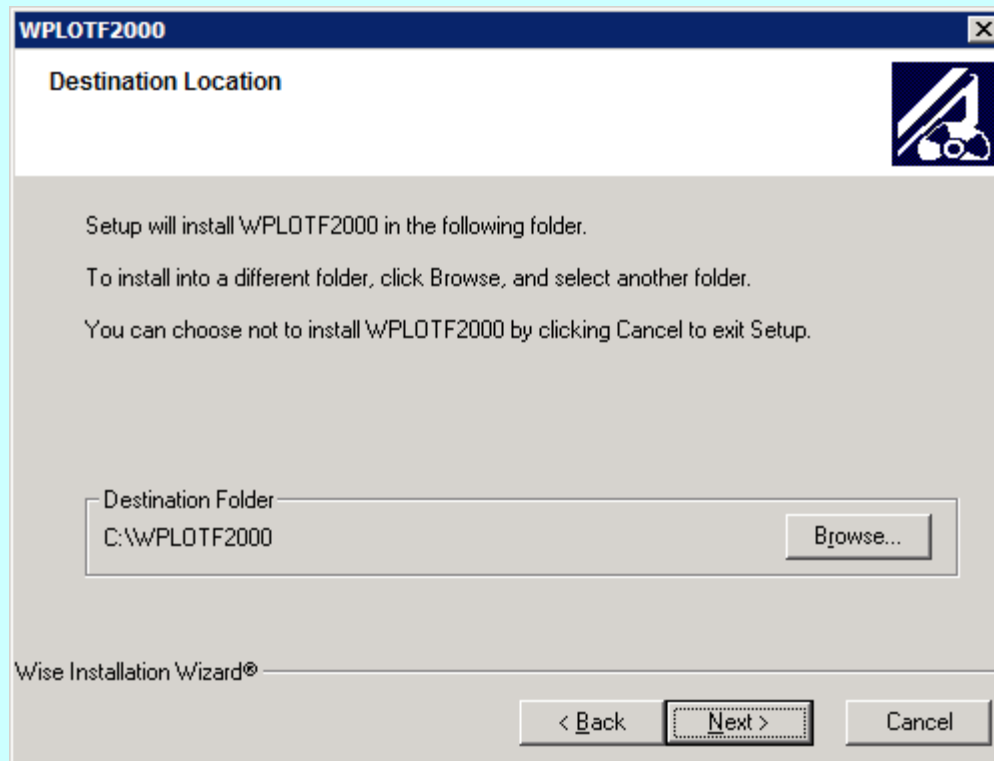


INSTALLATION OF WPLOT2000EX

N.Schall
25.03.2008

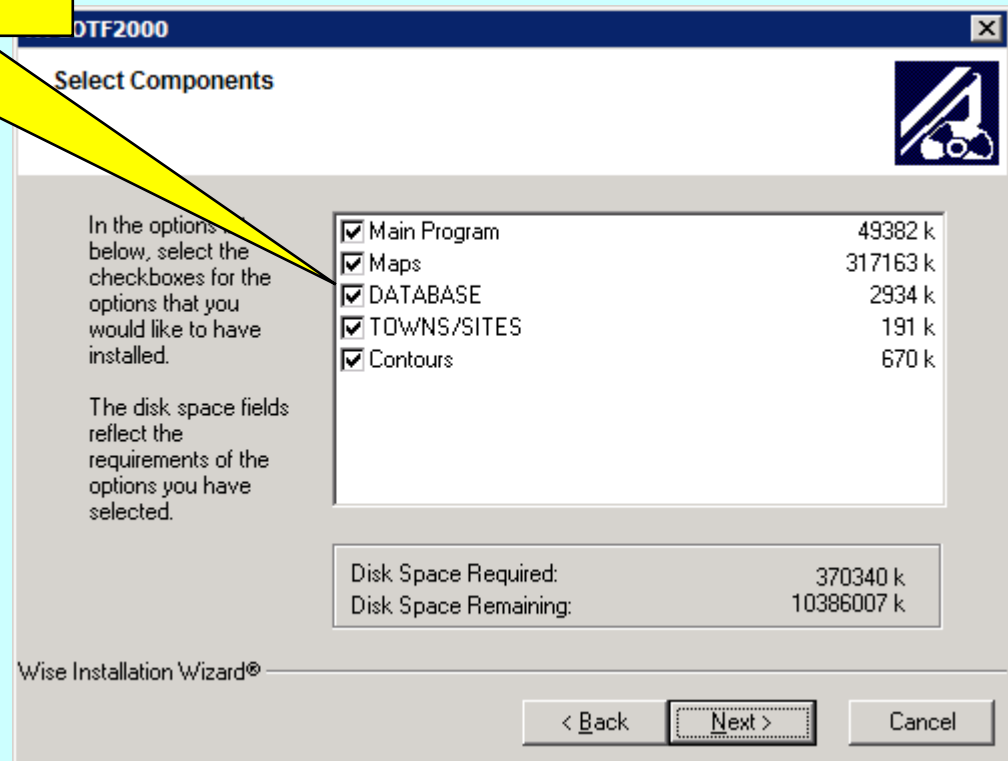
Installation

Start INST_WPLOT2000EX.EXE
(double-click)



Installation

if you already have a database in your directory, disable this item to avoid over-writing the data

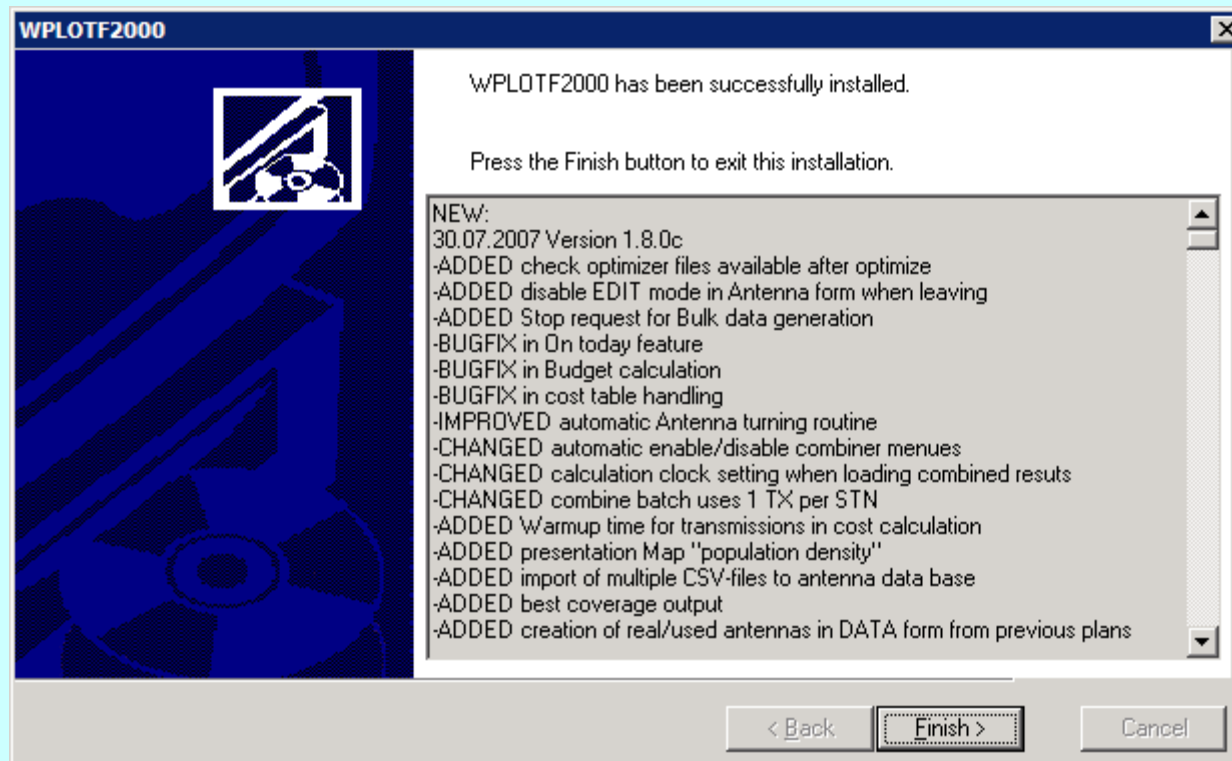


Installation

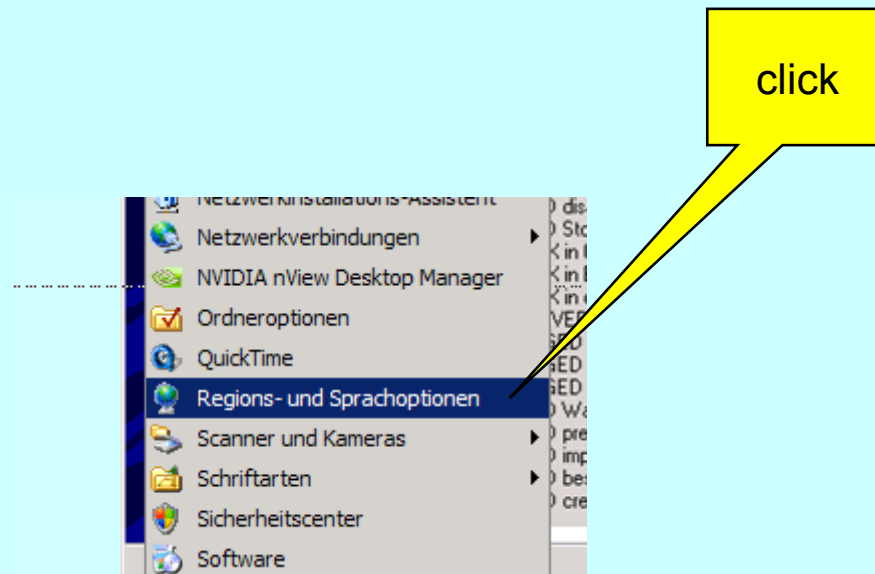


enter the password

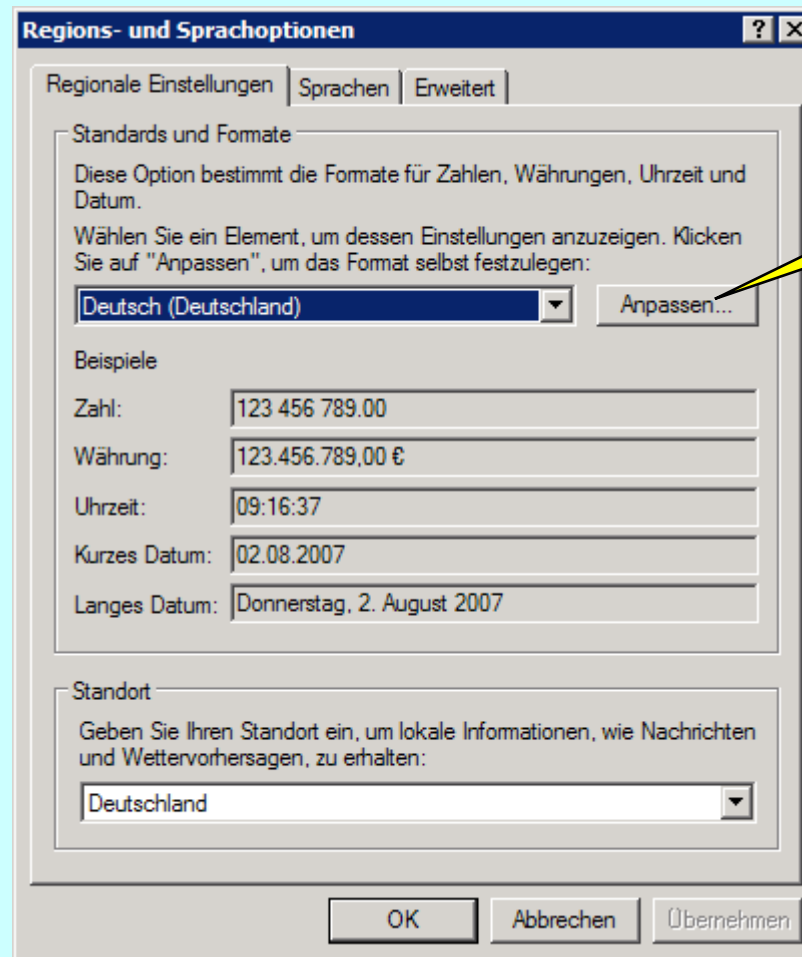
Installation



Windows System settings



Windows System settings



Windows System settings

Regionale Einstellungen anpassen

Zahlen | Wahrung | Uhrzeit | Datum | Sortierung

Beispiel
Positiv: 123 456 789.00 Negativ: -123 456 789.00

Dezimaltrennzeichen: .
Anzahl der Dezimalstellen: 2
Symbol fur Zifferngruppierung:
Zifferngruppierung: 123 456 789
Negatives Vorzeichen: -
Format fur negative Zahlen: -1.1
Fuhrende Nullen anzeigen: 0,7
Listentrennzeichen: ;
Masystem: Metrisch
Zifferersatz: Keiner

OK Abbrechen Ubernehmen

“ ”
.
(Dot)

“ ”

(space)

“ ”
 ;
(Semicolon)

Enable MAIN default settings

The screenshot shows the WPLOT DATA/NAVIGATION CENTER software interface. The title bar reads "WPLOT DATA/NAVIGATION CENTER" and the menu bar includes "File", "Autostart", "TX-data", "Display", "Import", "Utility", "Calc", and "About". The main window displays "DWL:WPLC" and "Copyright: Norbert Schall". A menu is open over the "Utility" menu item, listing various options. A yellow callout bubble with the word "click" points to the "Default settings" option in the menu.

Utility

- ENTER FMO:DWL
- ENTER BRC:DWL
- Import SITE.TXT
- Import SEASON.TXT
- Edit towns
- Parameters
- Compress database
- Select receiverlocations
- Edit Cost Table
- Delete old results in active workingdirectory
- Copy Target contours to current Workingdirectory
- Show results of smoothed calculations
- Show selected reception locations
- Change field delimiter for CSV-files
- Enable EXPERT mode
- Enable ALL options
- Work on antenna database
- Save all MAPS to current working directory
- Restore MAPS from current working directory
- Cleanup Working directory
- Default settings

DISPLAY TOWNS

- MONITOR
- WORLD
- EUROPE
- USER
- STATION
- truncate to 3 CHARS

MAP resolution:HIGH

GC Map GLOBE +180

USE BITMAP

WORLD

UTC:06:22:07 08:22 01.08.2008

First start of WPLOT2000EX

WPLOT DATA/NAVIGATION CENTER
 File Autostart TX-data Display Import Utility Calc About

DWL:WPLOT2000EX-DFc V3.2.1F- N.SCHALL
 Copyright: Norbert Schall, nschall@t-online.de, www.norbertschall.de, 2008 edition (ini)

3 TX R(015)-A(90-T(B11))-UTC0030-0045 TX03

enable/disable TX Show only first TX Show AZIMUT in legend

NO	LAT	LON	NAME	KW	FREQ	START	END	MOD	DIST	COL	AND	SLEW	DFreq	DIR	COL
1	-1.883	30.067	KIG	250	15205	2100	2157	0	6000	0	217	0	12970	295	6
2	-1.883	30.067	KIG	250	11865	2100	2200	0	6000	0	146	0	10660	295	6
3	50.800	-2.633	RMP	500	9735	2100	2200	0	6000	0	217	0	8450	140	6
4															
5															
6															
7															

C:\dwpropag\TSSYSWPLOT.WPL

LAT START - END
 -90 90 SELECT

LON START - END
 -180 180 SELECT

GRID-correction

MAP resolution: HIGH

GC Map GLOBE +180

USE BITMAP

WORLD

MAP OPTIONS

COUNTRY Show GRID
 US 0
 RIVERS

AUXILIARY DISPLAY DATA

Show CIRAF ZONES
 Show TIMEZONE
 Show TEST POINTS

DISPLAY TOWNS

MONITOR WORLD
 EUROPE USER
 STATION
 truncate to 3 CHARS

CALC PARAMETERS REC533

E-EMIN Field strength

AM/DRM PARAMETER

Availability (%) 90 S/N(dB) 34

Month 6

UTC 12

MHz 6.1

SSN 15

USE ANT-DESIGN FREQUENCY
 USE ANTENACACHE : 1617 Files

MAP

DATA

SCAN

PRM LOAD

PRM SAVE AS

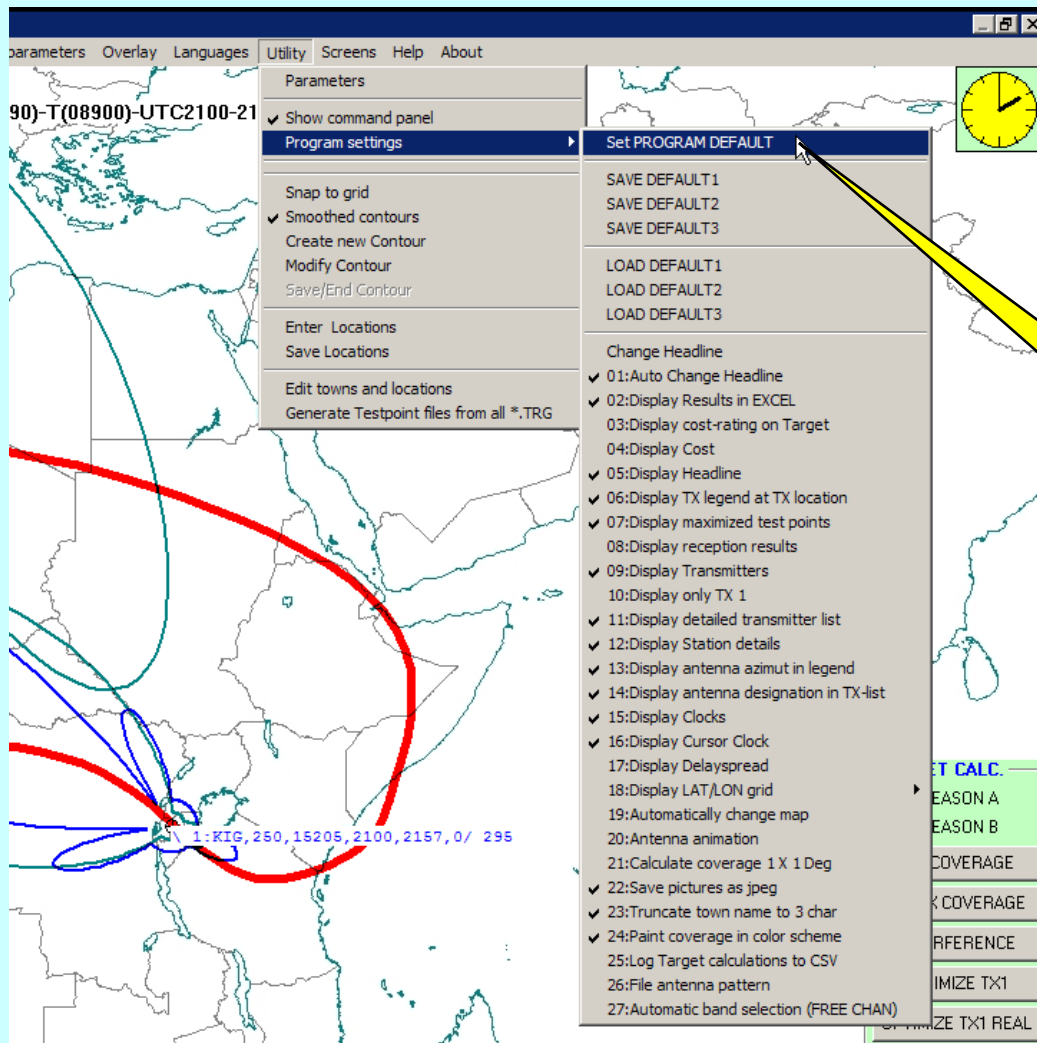
PRM SAVE

EXIT

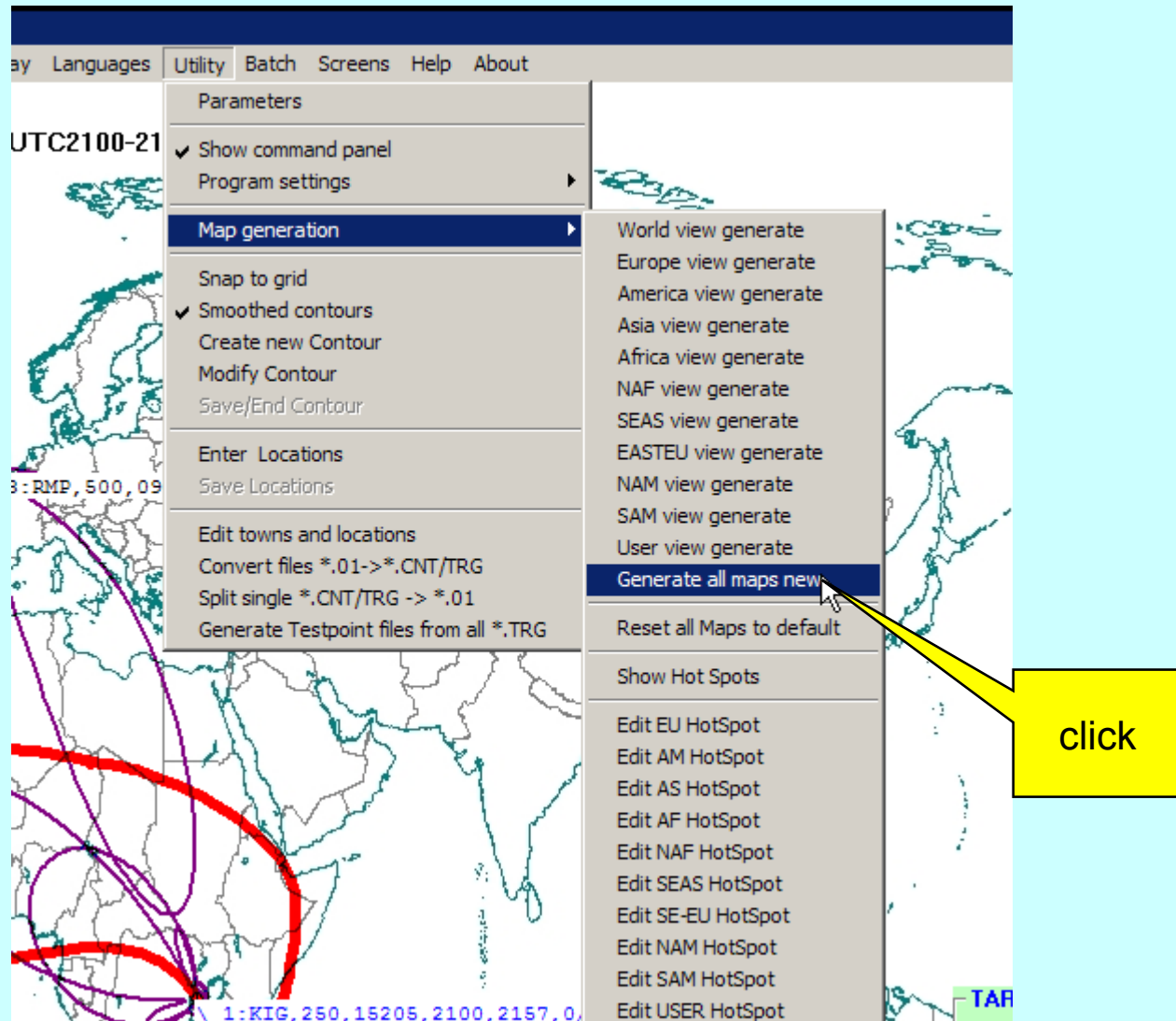
UTC: 06:23:12 08:23 01.08.2008

click

Enable MAP Default settings



generate new Background MAPS for optimum quality



Done
many happy computings

Norbert Schall
nschall@t-online.de
if you need support, send me an email